



Meadow Opulent

5
Bedrooms

5
Bathrooms

4,086
Living Area

22,135
Lot Area



Meadow Opulent

Meadow Opulent

Exceptional curb appeal on the prestigious 600 block of the most desirable Beverly Hills Flats. This estate is set on over half an acre lot with a rare opportunity of 189x114 sqft flat lot. Traditional 2 story with grand entrance, formal living and dining room along with a huge library/family room which opens to the extensive grounds. Secondary interior service stair case conveniently accessible from kitchen. Charming architectural elements have been lovingly cared for and are well-preserved. Two additional structures can be used for office, guest house and gym. Pool and jacuzzi in backyard with beautiful mature trees and huge grassy area. There is also a large motor court with parking for many cars. The grounds are nothing short of magnificent.

Interior

Total bedrooms	5
Total bathrooms	5
Full bathrooms	5

Area & Lot

Living area	4,086sq.ft.
Lot area	22,135sq.ft.
Year built	1926
Neighborhood	Beverly hills
Architecture styles	Traditional
View description	Trees/woods

Exterior

Stories	2
Parking	5



Meadow Opulent



Meadow Opulent



Meadow Opulent



Meadow Opulent



Meadow Opulent



Meadow Opulent



Meadow Opulent



Meadow Opulent



Meadow Opulent



Meadow Opulent



Meadow Opulent



Meadow Opulent



Meadow Opulent



Meadow Opulent



Meadow Opulent



Meadow Opulent



Meadow Opulent



Meadow Opulent



Meadow Opulent



Meadow Opulent



Meadow Opulent



Meadow Opulent



Meadow Opulent



Meadow Opulent



Meadow Opulent



Meadow Opulent



Meadow Opulent



Meadow Opulent



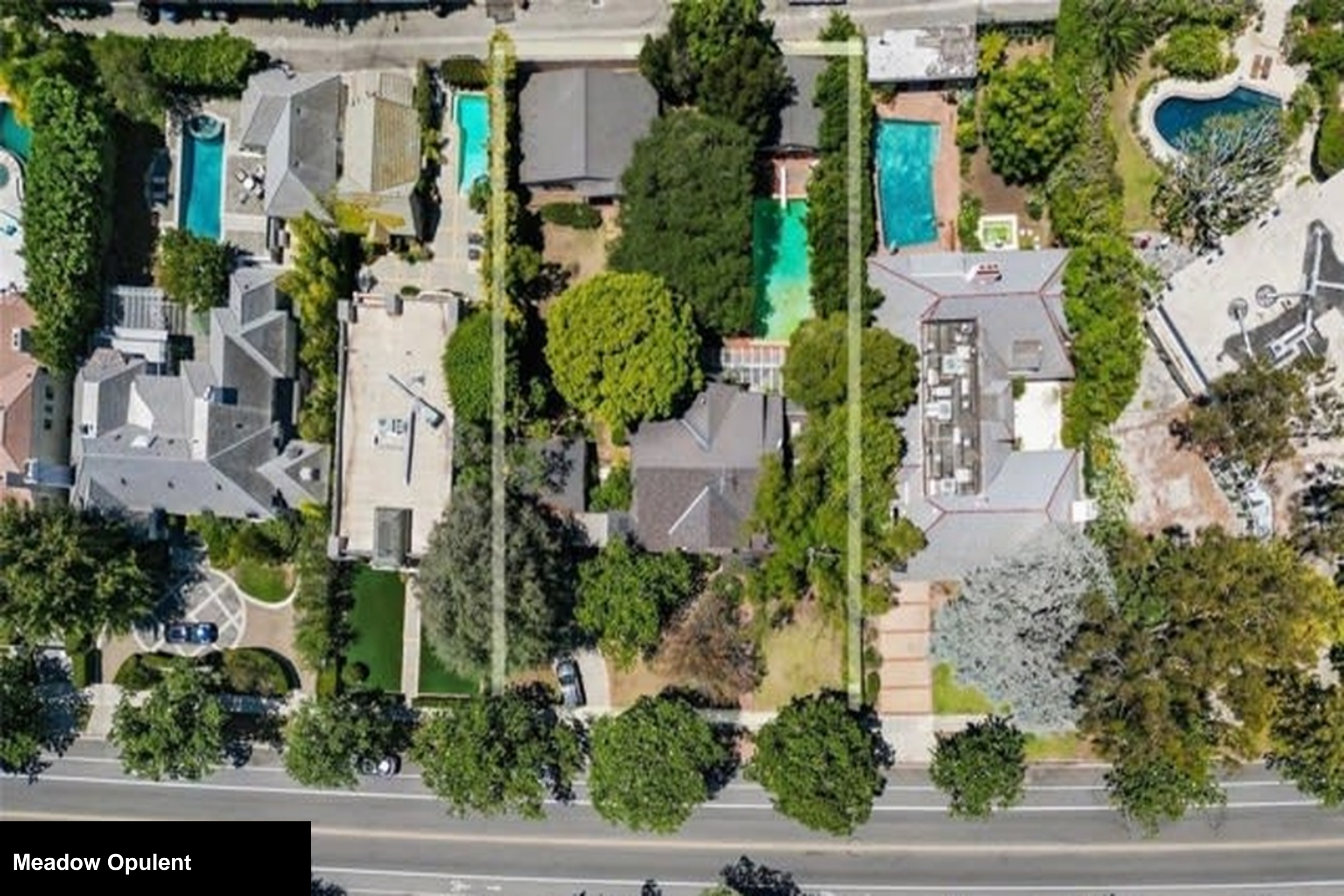
Meadow Opulent



Meadow Opulent



Meadow Opulent



Meadow Opulent

